

# JOURNAL OF MOLECULAR ENDOCRINOLOGY

MOLECULES, CELLS AND MECHANISMS



published by  
bioscientifica

an official journal of  
esa  
endocrine society of australia

AN OFFICIAL  
ESE  
JOURNAL

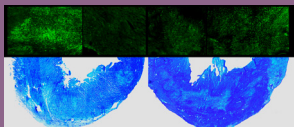
The Society for Endocrinology is one of the world's leading authorities on hormones.

Established in 1946, the Society's aims are to support the advancement of scientific and clinical knowledge and increase research in endocrinology for the public benefit. It also plays a vital role in promoting and supporting endocrinology worldwide.

The Society for Endocrinology offers a range of journals including *Journal of Endocrinology*, *Journal of Molecular Endocrinology*, *Endocrine-Related Cancer*, *Endocrine Connections* (open access) and *Clinical Endocrinology*.

For more information visit [www.endocrinology.org](http://www.endocrinology.org)

## COVER ART COMPETITION



Readers are invited to submit their endocrinology images for entry into the *Journal of Molecular Endocrinology* cover art competition. Winners will be selected by the Editor-in-Chief and will have their imagery featured on the cover of an issue of *Journal of Molecular Endocrinology*, both in print and online. Winners will be cited in the journal and will receive a professionally printed copy of the journal cover featuring their scientific image.

To enter the competition please email your images to [jme@endocrinology.org](mailto:jme@endocrinology.org) accompanied with a short caption of 25-30 words explaining what the image depicts, its magnification and who should be acknowledged for its production. Images should be of high quality and resolution of at least 300 dpi at the final published size 220 mm (W) × 100 mm (H).

By submitting an image you warrant that you own the copyright and agree that images may be used in promotional material. Images not selected for use may still be used by the Society for Endocrinology and Bioscientifica for promotional purposes.

---

## THIS ISSUE'S COVER

The images depict capillary densities in the left ventricle of ischemia/reperfusion (I/R) injured hearts stained with isolectin B4 (IB4) (green, top) and low-power photomicrographs of toluidine blue-stained heart sections (blue, bottom). Rats treated with  $T_3$  (right) demonstrated a more homogeneous and organized capillary density pattern (compared to controls, left) and reduced infarct area. From Sabatino *et al.* **57** 139-149.

Credit: L Sabatino, C Kusmic, G Nicolini, G Iervasi, S Balzan (CNR, Pisa, Italy); R Amato, G Casini (University of Pisa, Italy)

#### *Journal of Molecular Endocrinology*

(<http://jme.endocrinology-journals.org>; ISSN (print) 0952-5041; ISSN (online) 1479-6813) is published by Bioscientifica Ltd, EuroHouse, 22 Apex Court, Woodlands, Bradley Stoke, Bristol BS32 4JT, UK; Email: [jme@bioscientifica.com](mailto:jme@bioscientifica.com). Registered in England No. 3190519.

#### **Frequency of publication**

Articles in *Journal of Molecular Endocrinology* are published continuously online. Thereafter the articles are compiled into eight online/print issues. There are two volumes per year and four issues per volume.

#### **Abstracting and Indexing**

Indexed/abstracted in: Chemical Abstracts, Current Content/Life Sciences, EMBASE/Excerpta Medica, Index Medicus/MEDLINE, Science Citation Index, Science Citation Index Expanded, Scopus.

#### **Editorial address and submissions**

The journal accepts online submissions only. Guidelines for this can be found via <http://jme.endocrinology-journals.org>. Editorial correspondence should be addressed to Editor-in-Chief, *Journal of Molecular Endocrinology*, Email: [jme@bioscientifica.com](mailto:jme@bioscientifica.com). Instructions to authors appear online.

#### **Subscription rates 2017**

Institutions £1545 / €2251 / \$2750 (print and online)  
(not for profit) £1236 / €1801 / \$2200 (online only)  
plus VAT where applicable

Corporate £2009 / €2926 / \$3575 (print and online)  
£1607 / €2341 / \$2860 (online only)  
plus VAT where applicable

All orders, accompanied by payment, should be sent direct to their agent for distribution, *Journal of Molecular Endocrinology*, Turpin Distribution, Pegasus Drive, Stratton Business Park, Biggleswade, SG18 8TQ, UK (Tel: C44(0)1767 604951; Fax: C44(0)1767 601640; Email: [bioscientifica@turpin-distribution.com](mailto:bioscientifica@turpin-distribution.com))

#### **Claims and communication**

All communications or claims regarding issues lost or damaged in transit should be addressed to the distributor (see above for address). No claims can be entertained if they are later than 3 months after the date of despatch.

#### **Advertisements**

Advertising enquiries should be sent to: [advertising@endocrinology.org](mailto:advertising@endocrinology.org). Copy is required 6 weeks before publication date. Rates are available online.

#### **Disclaimer**

The papers contained in each issue of the journal have been prepared and written by named authors. Accordingly, neither the Society for Endocrinology nor their officers, employees or agents are responsible for the accuracy or otherwise of any papers and shall have no liability for any claims, damages or losses however arising from the contents of any papers or any use to which they may be put by any person.

#### **Copyright**

© 2017 Society for Endocrinology. This publication is copyright under the Berne Convention and the Universal Copyright Convention. All rights reserved. Apart from any relaxations permitted under national copyright laws, no part of this publication may be reproduced, stored in a retrieval system or transmitted in any form or by any means without prior permission of the copyright owners save under a licence issued in the UK by the Copyright Licensing Agency.

*Photocopying in the USA:* Authorization to photocopy items for internal or personal use, or the internal or personal use of specific clients is granted by the Society for Endocrinology, provided that the appropriate fee is paid directly to Copyright Clearance Center, 222 Rosewood Drive, Danvers, MA 01923, USA (Tel: 978-750-8400; Fax: 978-646-8600; E-mail: [info@copyright.com](mailto:info@copyright.com)). Prior to photocopying items for educational classroom use, please contact Copyright Clearance Center, Inc. at the address shown above.

#### **Acknowledgements**

Typeset by Deanta Global Publishing Services, Chennai, India  
Printed by Henry Ling Limited, Dorset, UK  
Printed on acid-free paper.

